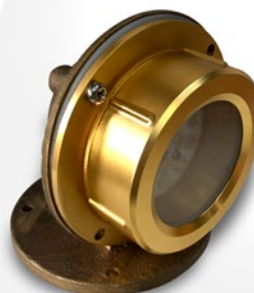


## LED DECK LIGHT



The images are merely illustrative, some technical features and accessories may be changed without notice



May 2019

## Product Description

These LED vapor-proof, Marine Grade Aluminum Bulkhead Deck Lamp are designed for harsh environments in both wet or dry locations. They are available in Wall Mount and/or Ceiling Mount.

They are IP66 rated with a built-in junction box that has four knockouts to accommodate 3/4" conduit. There is no glass lens, or globe protector to vibrate loose, or break. The 15W LED fixture projects a 90-degree beam in a warm, 4000K light emitting up to 1500 lumens.

The light output is comparable to a 150-watt incandescent bulb. Operates on 100-277 VAC. Typical applications include gantry and walkway lighting for workboats, tankers and cargo ships, offshore and inshore oil rigs, warehouses, food processing plants, commercial laundromats, coolers/freezers, tunnels, and more.



## Key Features

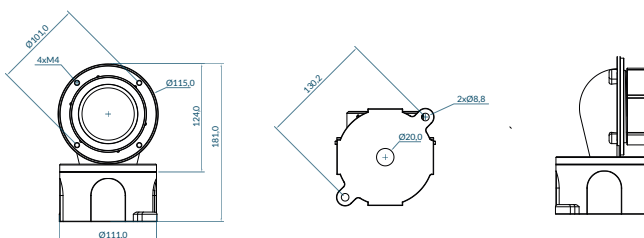
- 5 year factory warranty
- Modular manufacturing process
- Resistant to shock, impact and vibrations
- Easy installation
- Conforms to IP66
- Marine outside type saltwater

## Product Specifications

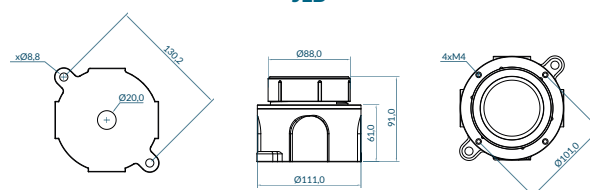
|                               |                     |
|-------------------------------|---------------------|
| <b>LED package:</b>           | SMD 3030            |
| <b>Power consumption:</b>     | 12W & 15W           |
| <b>Input voltage:</b>         | 100~277V AC 50/60Hz |
| <b>Efficacy:</b>              | Up to 100 lm/W      |
| <b>THD:</b>                   | < 15%               |
| <b>P.F.:</b>                  | > 0.98              |
| <b>CRI:</b>                   | > 70                |
| <b>Dimming:</b>               | No                  |
| <b>Material:</b>              | Aluminum            |
| <b>Beam angle:</b>            | 60°, 90°            |
| <b>IP rating:</b>             | IP66                |
| <b>Fire rating:</b>           | UL94V0              |
| <b>Operating temperature:</b> | -40°C~50°C          |

## Product Measurement

**JLA**



**JLB**

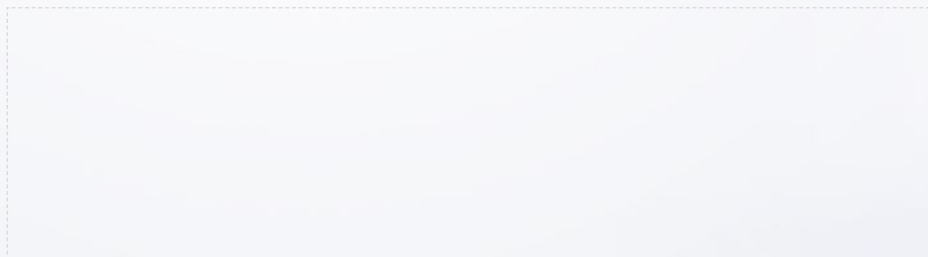




## Ordering Guide

JLAS12M100C30

| Type | Structure |           | Dim or Non-dim |              | Watts |     | Driver/Voltage |          | Efficiency |         | Cover |       | CCT |       |
|------|-----------|-----------|----------------|--------------|-------|-----|----------------|----------|------------|---------|-------|-------|-----|-------|
| JL   | A         |           | S              |              | 12    |     | M              |          | 100        |         | C     |       | 30  |       |
| JL   | A         | Structure | S              | Non-dimmable | 12    | 12W | M              | Internal | 100        | 100lm/W | C     | Clear | 30  | 3000K |
|      | B         | type      |                |              | 15    | 15W |                | 100-277V |            |         |       |       | 40  | 4000K |
|      |           |           |                |              |       |     |                | 50/60Hz  |            |         |       |       | 50  | 5000K |



**World Headquarters**

3345 Industrial Dr.

Building #16

Santa Rosa, CA 95403, USA

+1 844 TESLITE

[www.teslights.com](http://www.teslights.com) - [info@teslights.com](mailto:info@teslights.com)