

# Teslights+



The images are merely illustrative, some technical features and accessories may be changed without notice.



May 2019

For additional information, please contact us  
[www.teslights.com](http://www.teslights.com) - [info@teslights.com](mailto:info@teslights.com)



Pending



Pending





## Product Description

Technological stability and economy of operation make Teslights' LED Streetlights the first choice of professional planners for delivering precise illumination over streets, highways, public buildings, and parking lots. Advanced integrations with Teslights sensor and controller technologies now allow for full participation in increasingly popular worldwide initiatives for developing "Smart" cities. While reducing maintenance costs and improving performance, the superior quality output of the Teslights LED Streetlights deliver immediate modernization in illumination.



## Key Features

- High performance design with Nichia Chip
- Superior temperature stability
- 5 year factory warranty
- Temperature test at toughest conditions
- Superior temperature stability
- No external reflectors required
- PC cover : Safe for industrial applications
- IP66 protection rating



## Product Specifications

### Streetlight C

<b>LED package:</b>	Nichia SMD
<b>Power consumption:</b>	50W
<b>Input voltage:</b>	100-240Vac / 100-277Vac 50-60Hz
<b>Efficacy:</b>	Up to 140lm/W±5%
<b>THD:</b>	<20%
<b>P.F.:</b>	≥0.95
<b>CRI:</b>	>70 / >80
<b>Dimming:</b>	Time Control
<b>Material:</b>	Aluminum alloy and pc cover
<b>Beam angle:</b>	R17601, R17602
<b>IP rating:</b>	IP66
<b>Operating temperature:</b>	-30°C ~ + 50°C

### A Professional Outdoor Lighting Product

#### Easy Maintenance

- Buckle for fixing heat sink could be opened without tools.
- There is a supporting bracket to hold upper and lower parts of fixture body, when electricians open for maintaining.

#### Easy Replacement for LED Driver

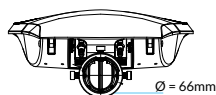
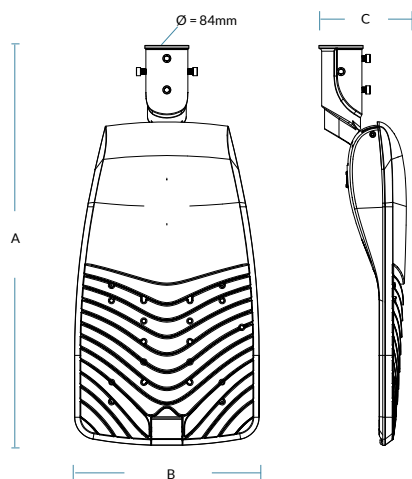
- The LED driver is fixed by buckles, can be installed or removed easily.

#### Warm or Cold Multiple CCT Options

- 4000K, 3000K and 5000K could be offered for SLM. And 3000K and 4000K are highly in line with Euro style constructions, and complies with EU photo-biological standard.



## Product Measurement



Model	Measures (AxBxC)
SLM - 50W	763x352x167mm



## Ordering Guide

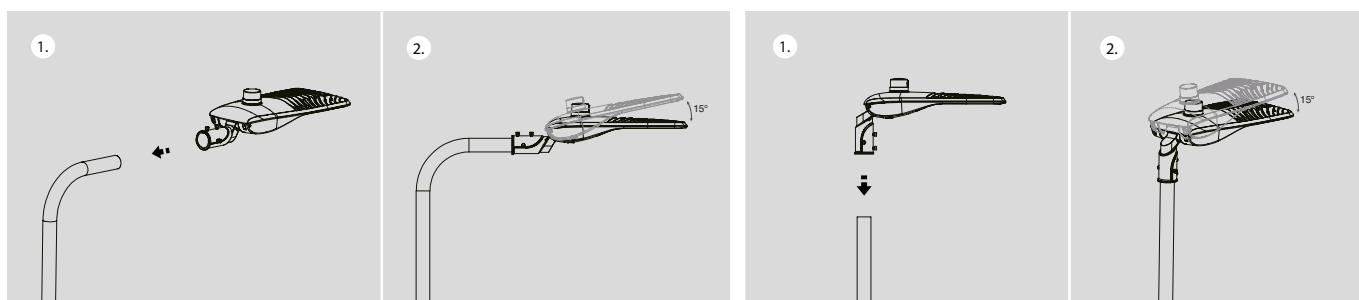
Example: SLMP50M140F40

Type	Dim or Non-Dim		Watts		Driver/Power		Efficiency		Cover		CCT		Installation Methods
SLM	P		50		M		140		F		40		
SLM	S P	Non dimmable Dimmable	50	50 W	M	Internal 100~240VAC/ 100~277VAC	140	140 lm/W	F	Frost	30 40	3000 K 4000 K	

**Note:** We can also produce SLM in different Wattages, lumens variations and color temperatures.  
For more information contact your account manager.

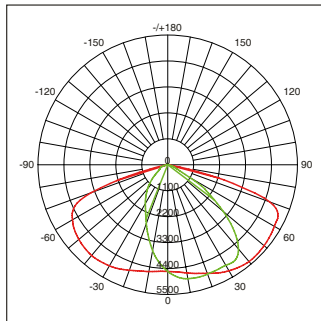


## Mounting Options

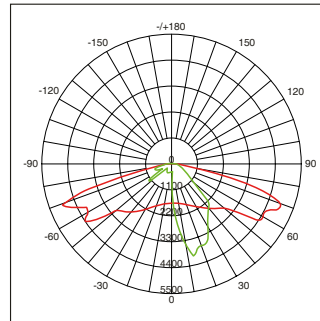




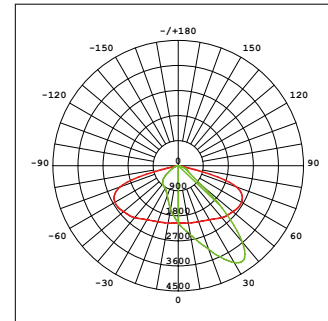
## Photometric Diagrams



(Type II) R17601, R09603



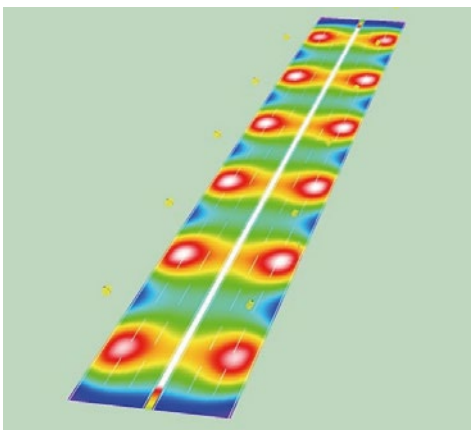
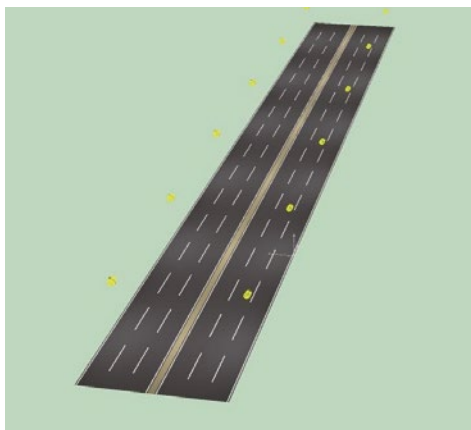
(Type II) R09602



(Type II) R17602, R09601



## Dialux Simulation



### Calculation Field List

Valuation Field Roadway 1

**Length:** 25.000m

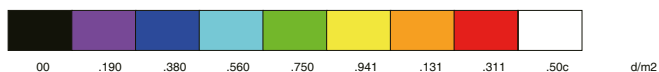
**Width:** 10.500m

**Grid:** 10x9 Points

**Accompanying Street Elements:** Roadway1

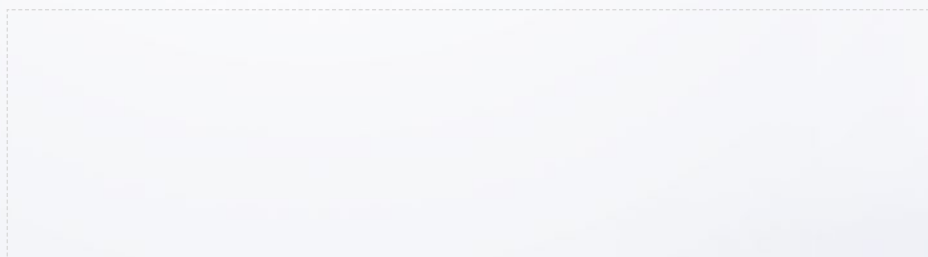
**Selected Lighting Class:** ME2 (All lighting performance requirements are met.)

	Lav [cd/ m <sup>2</sup> ]	UO	UI	TI [%]	SR
Calculated values:	2.08	0.69	0.91	7	0.75
Required values according to class:	≥ 2.00	≥ 0.40	≥ 0.70	≤ 10	≥ 0.50
Fulfills / Not Fulfilled:	✓	✓	✓	✓	✓





# Teslights+



**World Headquarters**

3345 Industrial Dr.

Building #16

Santa Rosa, CA 95403, USA

+1 844 TESLITE

[www.teslights.com](http://www.teslights.com) - [info@teslights.com](mailto:info@teslights.com)